

BLUE STAR

Power Systems Inc.

Diesel Product Line

208-600 Volt

TD600-01 / TD600-01P

60 Hz / 1800 RPM

600 kWe / 550 kWe

Standby / Prime

Ratings

	208V	240V	480V	600V
Phase	3	3	3	3
PF	0.8	0.8	0.8	0.8
Hz	60	60	60	60
Generator Model	573RSL4033	573RSL4033	572RSL4031	572RSS4272
Connection	12 LEAD WYE	12 LEAD DELTA	12 LEAD WYE	4 LEAD WYE
Standby				
kWe	600	600	600	600
AMPS	2084	1806	903	723
Temp Rise	130°C / 27°C	130°C / 27°C	130°C / 27°C	130°C / 27°C
Prime [Only Available For Mobile Applications]				
kWe	550	550	550	550
AMPS	1911	1656	828	662
Temp Rise	105°C / 40°C	105°C / 40°C	105°C / 40°C	105°C / 40°C

Standard Equipment

Engine

- ▶ Radiator Cooled Unit Mounted (50°C)
- ▶ Blower Fan & Fan Drive
- ▶ Starter & Alternator
- ▶ Oil Pump & Filter
- ▶ Oil Drain Extension w/Valve
- ▶ Governor - Electronic Isochronous
- ▶ 24V Battery System & Cables
- ▶ Air Cleaner (Dry Single Stage)
- ▶ Flexible Fuel Connector
- ▶ EPA Certified Tier 2

Listing Certifications

- ▶ UL 2200 Listed
- ▶ cUL Listed
- ▶ CSA Certified
- ▶ Seismic Certified to IBC 2012

Generator

- ▶ Brushless Single Bearing
- ▶ Automatic Voltage Regulator
- ▶ ± .25% Voltage Regulation
- ▶ 4 Pole, Rotating Field
- ▶ 130°C Standby Temperature Rise
- ▶ 105°C Prime Temperature Rise
- ▶ 100% of Rated Load - One Step
- ▶ 5% Maximum Harmonic Content
- ▶ NEMA MG 1, IEEE and ANSI Standards Compliance for Temperature Rise

Additional

- ▶ Microprocessor Based Digital Control
- ▶ Interface Connection Box
- ▶ Control Panel Mounted in NEMA 12 Enclosure
- ▶ Base - Structural Steel
- ▶ Main Line Circuit Breaker Mounted & Wired
- ▶ Critical Grade Silencer Mounted
- ▶ Battery Charger 24V 5 Amp
- ▶ Jacket Water Heater -20°F 6000W 240V w/Isolation Valves
- ▶ Vibration Isolation Mounts
- ▶ Radiator Duct Flange (OPU Only)
- ▶ Single Source Supplier
- ▶ 2YR / 2000HR Standby Warranty
- ▶ 1YR / 1500HR Prime Warranty
- ▶ Standard Colors - White / Tan / Gray

Diesel Product Line

600 kWe / 550 kWe



Application Data

Engine			
Manufacturer:	MTU	Displacement - Cu. In. (lit):	1282 (21.0)
Model Standby (Prime):	12V1600G80S (12V1600G20S)	Bore - in. (cm) x Stroke - in. (cm):	4.80 (12.2) x 5.90 (15.0)
Type:	4-Cycle	Compression Ratio:	17.5:1
Aspiration:	Turbo Charged, CAC	Rated RPM:	1800
Cylinder Arrangement:	12 Cylinder Vee	Max HP Stby (kWm):	896 (668)

Exhaust System	Standby	Prime
Gas Temp. (Stack): °F (°C)	797 (425)	777 (414)
Gas Volume at Stack Temp: CFM (m³/min)	4,662 (132)	4,450 (126)
Maximum Allowable Exhaust Restriction: in. H₂O (kPa)	60.2 (15.0)	60.2 (15.0)
Cooling System		
Ambient Capacity of Radiator: °F (°C)	122 (50.0)	122 (50.0)
Maximum Allowable Static Pressure on Rad. Exhaust: in. H₂O (kPa)	0.50 (0.12)	0.50 (0.12)
Water Pump Flow Rate: GPM (lit/min)	137 (517)	137 (517)
Heat Rejection to Coolant: BTUM (kW)	15,354 (269)	13,762 (241)
Heat Rejection to CAC: BTUM (kW)	9,667 (169)	8,530 (149)
Heat Radiated to Ambient: BTUM (kW)	5,123 (89.7)	4,305 (75.3)
Air Requirements		
Aspirating: CFM (m³/min)	1,907 (54.0)	1,865 (52.8)
Air Flow Required for Rad. Cooled Unit: CFM (m³/min)	26,700 (756)	26,700 (756)
Air Flow Required for Heat Exchanger/Rem. Rad. CFM (m³/min)	Consult Factory For Remote Cooled Applications	
Fuel Consumption		
At 100% of Power Rating: gal/hr (lit/hr)	40.0 (151)	37.0 (140)
At 75% of Power Rating: gal/hr (lit/hr)	30.2 (114)	28.0 (106)
At 50% of Power Rating: gal/hr (lit/hr)	21.2 (80.3)	19.8 (75.0)
Fluids Capacity		
Total Oil System: gal (lit)	19.3 (73.1)	19.3 (73.1)
Engine Jacket Water Capacity: gal (lit)	17.2 (65.1)	17.2 (65.1)
System Coolant Capacity: gal (lit)	28.1 (106)	28.1 (106)

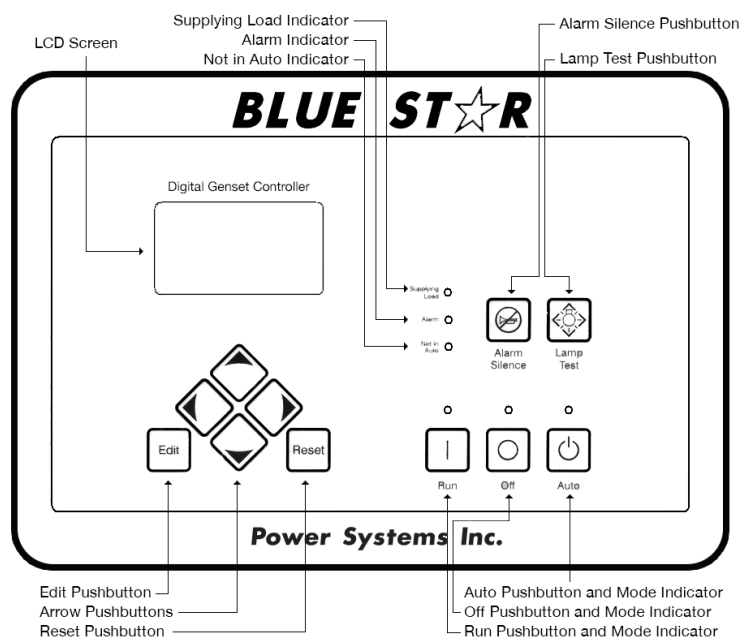
Deration Factors

Rated power available at ambient temperatures to 50°C. Derate 3% per 1,640 ft (500 m) above 4,265 ft (1,300 m). Consult factory for site conditions above these parameters.

DGC-2020 Control Panel

Standard Features

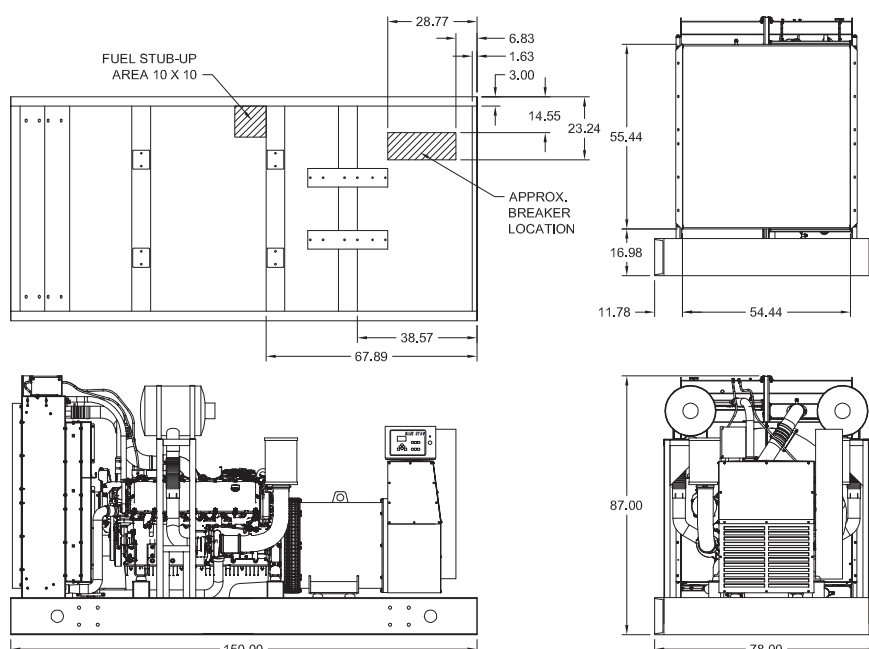
- ▶ Digital Metering
- ▶ Engine Parameters
- ▶ Generator Protection Functions
- ▶ Engine Protection
- ▶ CAN Bus ECU Communications
- ▶ Windows-Based Software
- ▶ Multilingual Capability
- ▶ Remote Communications to RDP-110 Remote Annunciator
- ▶ 16 Programmable Contact Inputs
- ▶ Up to 15 Contact Outputs (7 standard)
- ▶ UL Recognized, CSA Certified, CE Approved
- ▶ Event Recording
- ▶ IP 54 Front Panel Rating with Integrated Gasket
- ▶ NFPA 110 Level 1 Compatible



Weights / Dimensions / Sound Data

	L x W x H	Weight lbs
OPU	150 x 78 x 87 in	10,675
Level 1	200 x 78 x 110 in	12,525
Level 2	200 x 78 x 110 in	12,625
Level 3	255 x 78 x 110 in	13,100

Please allow 6-12 inches for height of exhaust stack.



	No Load	Full Load
OPU	91 dBA	94 dBA
Level 1	89 dBA	91 dBA
Level 2	84 dBA	87 dBA
Level 3	74 dBA	77 dBA

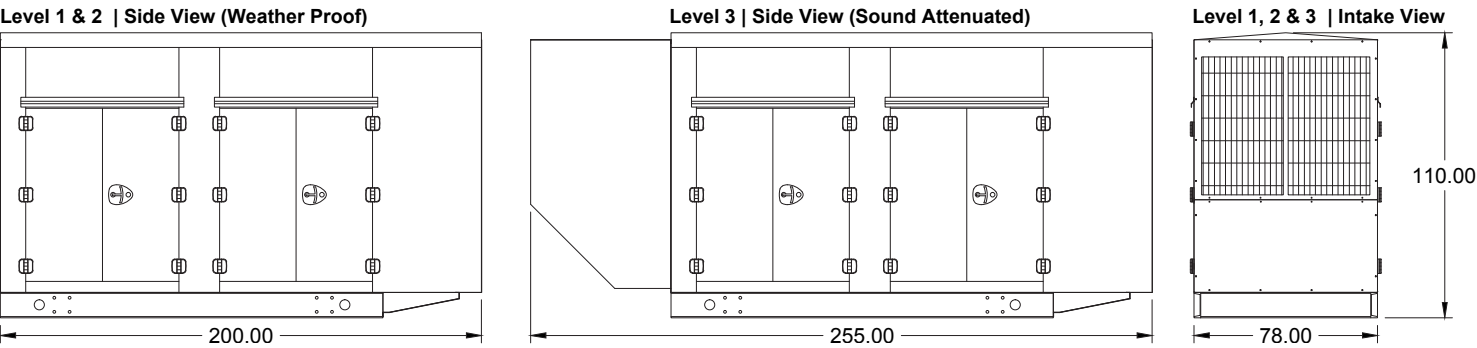
Drawings based on standard open power 480 volt standby generator. Lengths may vary with other voltages. Subject to change without notice.
Sound data as measured at 23 feet (7 meters) in accordance with ISO 8528-10 at standby rating.

Diesel Product Line

600 kWe / 550 kWe

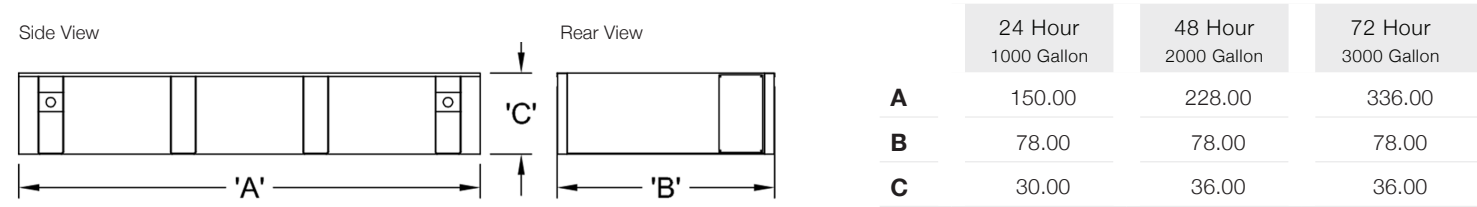


Enclosures



All enclosures are 150 MPH Wind Rated.
Level 2 & 3 enclosures include sound attenuation foam.
Level 3 enclosure includes frontal sound & exhaust hood.
*Enclosure height does not include exhaust stack.

Double Wall UL 142 Listed Fuel Tanks



All specification sheet dimensions are represented in inches.
All enclosures and fuel tanks are based on the standard standby unit configuration. Any deviation can change dimensions.
Materials and specifications subject to change without notice.



Distributed By:

PRIMA

POWER SYSTEMS INC.

Tel: 1-604-746-0606

Web: www.primapowersys.com

Blue Star Power Systems, Inc.
52146 Ember Road
Lake Crystal, Minnesota 56055
Phone + 1 507 726 2508
bluestarps.com
quote.bluestarps.com
sales@bluestarps.com