

BLUE STAR

Power Systems Inc.

Diesel Product Line

208-600 Volt

JD80-02

60 Hz / 1800 RPM

80 kWe / 70 kWe

Standby / Prime

Ratings

| | 240V | 208V | 240V | 480V | 600V |
|---|-----------------|--------------|---------------|--------------|--------------|
| Phase | 1 | 3 | 3 | 3 | 3 |
| PF | 1.0 | 0.8 | 0.8 | 0.8 | 0.8 |
| Hz | 60 | 60 | 60 | 60 | 60 |
| Generator Model | 363CSL1607 | 362CSL1604 | 362CSL1604 | 362CSL1604 | 362PSL1635 |
| Connection | 12 LEAD ZIG-ZAG | 12 LEAD WYE | 12 LEAD DELTA | 12 LEAD WYE | 4 LEAD WYE |
| Standby | | | | | |
| kWe | 80 | 80 | 80 | 80 | 80 |
| AMPS | 333 | 278 | 241 | 120 | 96 |
| Temp Rise | 130°C / 27°C | 130°C / 27°C | 130°C / 27°C | 130°C / 27°C | 130°C / 27°C |
| Prime [Only Available For Mobile Applications] | | | | | |
| kWe | 70 | 70 | 70 | 70 | 70 |
| AMPS | 292 | 243 | 211 | 105 | 84 |
| Temp Rise | 105°C / 40°C | 105°C / 40°C | 105°C / 40°C | 105°C / 40°C | 105°C / 40°C |

Standard Equipment

- | | | |
|---|--|---|
| <p>Engine</p> <ul style="list-style-type: none"> ▶ Radiator Cooled Unit Mounted (50°C) ▶ Blower Fan & Fan Drive ▶ Starter & Alternator ▶ Oil Pump & Filter ▶ Oil Drain Extension w/Valve ▶ Governor - Electronic Isochronous ▶ 12V Battery System & Cables ▶ Air Cleaner (Dry Single Stage) ▶ Flexible Fuel Connector ▶ EPA Certified Tier 3 <p>Listing Certifications</p> <ul style="list-style-type: none"> ▶ UL 2200 Listed ▶ cUL Listed ▶ CSA Certified ▶ Seismic Certified to IBC 2012 | <p>Generator</p> <ul style="list-style-type: none"> ▶ Brushless Single Bearing ▶ Automatic Voltage Regulator ▶ ± 1% Voltage Regulation ▶ 4 Pole, Rotating Field ▶ 130°C Standby Temperature Rise ▶ 105°C Prime Temperature Rise ▶ 100% of Rated Load - One Step ▶ 5% Maximum Harmonic Content ▶ NEMA MG 1, IEEE and ANSI Standards Compliance for Temperature Rise | <p>Additional</p> <ul style="list-style-type: none"> ▶ Microprocessor Based Digital Control ▶ Interface Connection Box ▶ Control Panel Mounted in NEMA 12 Enclosure ▶ Base - Formed Steel ▶ Main Line Circuit Breaker Mounted & Wired ▶ Critical Grade Silencer Mounted ▶ Battery Charger 12V 6 Amp ▶ Jacket Water Heater -20°F 1500W 120V w/Isolation Valves ▶ Vibration Isolation Mounts ▶ Radiator Duct Flange (OPU Only) ▶ Single Source Supplier ▶ 2YR / 2000HR Standby Warranty ▶ 1YR / 1500HR Prime Warranty ▶ Standard Colors - White / Tan / Gray |
|---|--|---|

Application Data

| Engine | | | |
|-----------------------|--------------------|--------------------------------------|---------------------------|
| Manufacturer: | John Deere | Displacement - Cu. In. (lit): | 275 (4.50) |
| Model: | 4045HF285 | Bore - in. (cm) x Stroke - in. (cm): | 4.19 (10.6) x 5.00 (12.7) |
| Type: | 4-Cycle | Compression Ratio: | 19.0:1 |
| Aspiration: | Turbo Charged, CAC | Rated RPM: | 1800 |
| Cylinder Arrangement: | 4 Cylinder Inline | Max HP Stby (kWm): | 126 (94.0) |

| Exhaust System | Standby | Prime |
|---|-------------|-------------|
| Gas Temp. (Stack): °F (°C) | 1,069 (576) | 1,042 (561) |
| Gas Volume at Stack Temp: CFM (m³/min) | 651 (18.4) | 612 (17.3) |
| Maximum Allowable Exhaust Restriction: in. H ₂ O (kPa) | 30.0 (7.50) | 30.0 (7.50) |

| Cooling System | Standby | Prime |
|---|--------------|--------------|
| Ambient Capacity of Radiator: °F (°C) | 122 (50.0) | 122 (50.0) |
| Maximum Allowable Static Pressure on Rad. Exhaust: in. H ₂ O (kPa) | 0.50 (0.12) | 0.50 (0.12) |
| Water Pump Flow Rate: GPM (lit/min) | 48.0 (182) | 48.0 (182) |
| Heat Rejection to Coolant: BTUM (kW) | 2,990 (52.3) | 2,855 (50.5) |
| Heat Rejection to CAC: BTUM (kW) | 627 (11.8) | 640 (11.2) |
| Heat Radiated to Ambient: BTUM (kW) | 1,138 (19.9) | 996 (17.4) |

| Air Requirements | Standby | Prime |
|---|--|-------------|
| Aspirating: CFM (m³/min) | 234 (6.62) | 223 (6.31) |
| Air Flow Required for Rad. Cooled Unit: CFM (m³/min) | 6,541 (185) | 6,541 (185) |
| Air Flow Required for Heat Exchanger/Rem. Rad. CFM (m³/min) | Consult Factory For Remote Cooled Applications | |

| Fuel Consumption | Standby | Prime |
|--|-------------|-------------|
| At 100% of Power Rating: gal/hr (lit/hr) | 6.60 (25.0) | 6.04 (22.9) |
| At 75% of Power Rating: gal/hr (lit/hr) | 5.37 (20.3) | 4.93 (18.7) |
| At 50% of Power Rating: gal/hr (lit/hr) | 3.96 (15.0) | 3.63 (13.8) |

| Fluids Capacity | Standby | Prime |
|---|-------------|-------------|
| Total Oil System: gal (lit) | 3.43 (13.0) | 3.43 (13.0) |
| Engine Jacket Water Capacity: gal (lit) | 2.24 (8.50) | 2.24 (8.50) |
| System Coolant Capacity: gal (lit) | 5.40 (20.4) | 5.40 (20.4) |

Deration Factors

Rated Power is available up to 10,000 ft (3,048 m) at ambient temperatures to 122°F (50°C) standby and prime. Consult factory for site conditions above these parameters.

DGC-2020 Control Panel

Standard Features

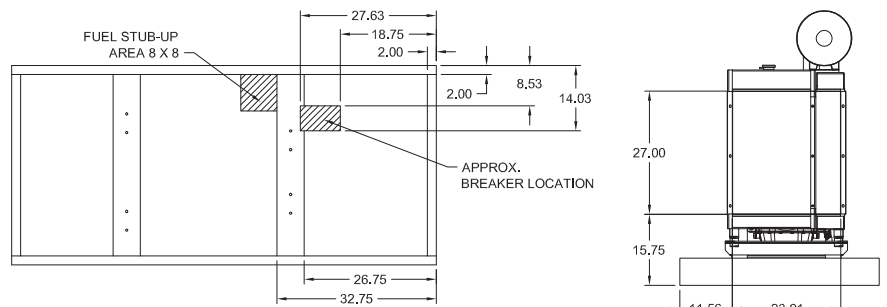
- ▶ Digital Metering
- ▶ Engine Parameters
- ▶ Generator Protection Functions
- ▶ Engine Protection
- ▶ CAN Bus ECU Communications
- ▶ Windows-Based Software
- ▶ Multilingual Capability
- ▶ Remote Communications to RDP-110 Remote Annunciator
- ▶ 16 Programmable Contact Inputs
- ▶ Up to 15 Contact Outputs (7 standard)
- ▶ UL Recognized, CSA Certified, CE Approved
- ▶ Event Recording
- ▶ IP 54 Front Panel Rating with Integrated Gasket
- ▶ NFPA 110 Level 1 Compatible



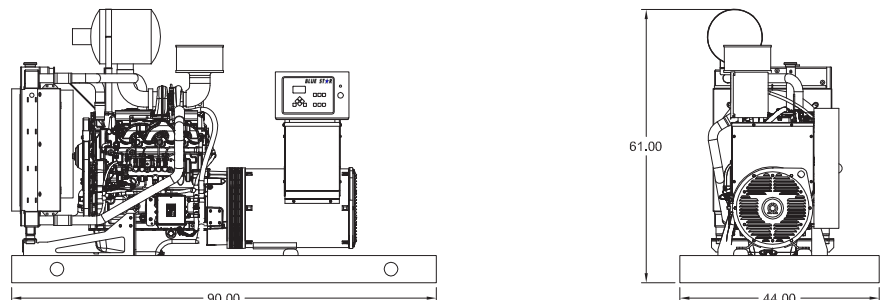
Weights / Dimensions / Sound Data

| | L x W x H | Weight lbs |
|----------------|------------------|------------|
| OPU | 90 x 44 x 61 in | 2,425 |
| Level 1 | 102 x 44 x 66 in | 3,050 |
| Level 2 | 102 x 44 x 66 in | 3,100 |
| Level 3 | 132 x 44 x 66 in | 3,275 |

Please allow 6-12 inches for height of exhaust stack.



| | No Load | Full Load |
|----------------|---------|-----------|
| OPU | 77 dBA | 81 dBA |
| Level 1 | 74 dBA | 77 dBA |
| Level 2 | 71 dBA | 73 dBA |
| Level 3 | 65 dBA | 67 dBA |



Drawings based on standard open power 480 volt standby generator. Lengths may vary with other voltages. Subject to change without notice. Sound data as measured at 23 feet (7 meters) in accordance with ISO 8528-10 at standby rating.

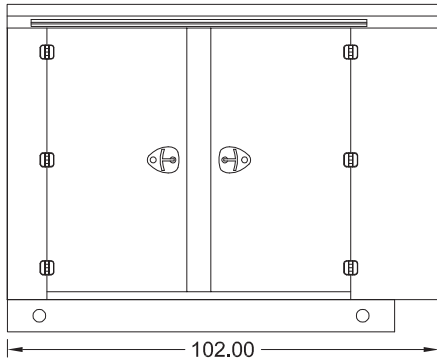
Diesel Product Line

80 kWe / 70 kWe

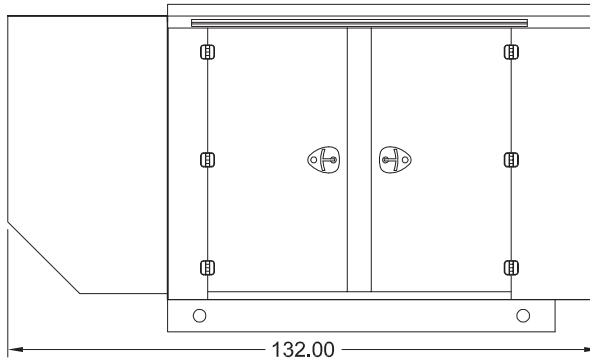


Enclosures

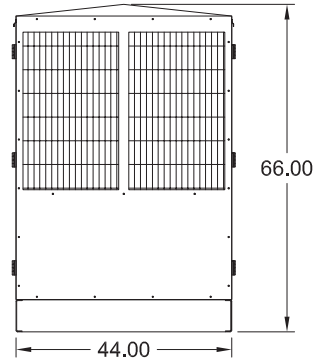
Level 1 & 2 | Side View (Weather Proof)



Level 3 | Side View (Sound Attenuated)



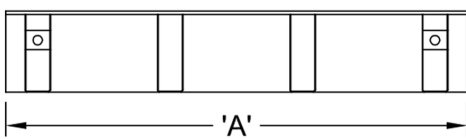
Level 1, 2 & 3 | Intake View



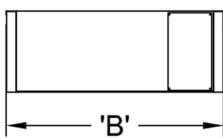
All enclosures are 150 MPH Wind Rated.
 Level 2 & 3 enclosures include sound attenuation foam.
 Level 3 enclosure includes frontal sound & exhaust hood.
 *Enclosure height does not include exhaust stack.

Double Wall UL 142 Listed Fuel Tanks

Side View



Rear View



| | 24 Hour 250 Gallon | 48 Hour 500 Gallon | 72 Hour 750 Gallon |
|----------|-----------------------|-----------------------|-----------------------|
| A | 90.00 | 120.00 | 174.00 |
| B | 44.00 | 44.00 | 44.00 |
| C | 28.00 | 36.00 | 36.00 |

All specification sheet dimensions are represented in inches.
 All enclosures and fuel tanks are based on the standard standby unit configuration. Any deviation can change dimensions.
 Materials and specifications subject to change without notice.

American Owned



American Made

Distributed By:

Tel: 1-604-746-0606
 Web: www.primapowersys.com

Blue Star Power Systems, Inc.

52146 Ember Road
 Lake Crystal, Minnesota 56055
 Phone + 1 507 726 2508
 bluestarps.com
 quote.bluestarps.com
 sales@bluestarps.com