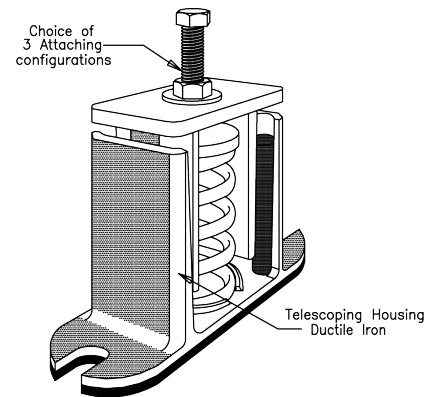


TJ Vibration Isolators

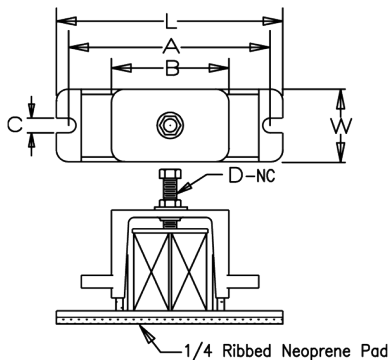


Steel compression springs isolate loads up to 7840 lbs per mount. Moderate spring deflections generally result in usage under medium through high speed equipment such as engine generator sets.

Non-Earthquake Rated



Specifications



| P/N | A | B | C | D | L | W |
|-----|-------------------------------|--------------------------------|--------------------------------|-------------------------------|-------------------------------|-------------------------------|
| TJB | 5 ³ / ₈ | 4 ⁷ / ₁₆ | 9 ¹ / ₁₆ | 1/2 | 6 ⁵ / ₈ | 2 |
| TJC | 12 | 7 | 5 ⁵ / ₈ | 5 ⁵ / ₈ | 13 | 2 ³ / ₈ |
| TJE | 12 | 7 | 1 ¹ / ₁₆ | 5 ⁵ / ₈ | 13 | 4 ⁵ / ₈ |

| 1 SPRING | | |
|----------|------------------|----------------------|
| TYPE | Max. LOAD (Lbs.) | Spring Rate (Lbs/in) |
| TJB | 21 | 18 |
| TJB | 55 | 49 |
| TJB | 79 | 70 |
| TJB | 106 | 94 |
| TJB | 120 | 52 |
| TJB | 155 | 70 |
| TJB | 187 | 165 |
| TJB | 244 | 216 |
| TJB | 318 | 281 |
| TJB | 395 | 220 |
| TJB | 511 | 341 |
| TJB | 715 | 550 |
| *TJB | 1060 | 1060 |
| *TJB | 1520 | 1950 |
| *TJB | 1960 | 2515 |

| 2 SPRINGS | | |
|-----------|------------------|----------------------|
| TYPE | Max. LOAD (Lbs.) | Spring Rate (Lbs/in) |
| TJC | 42 | 36 |
| TJC | 110 | 98 |
| TJC | 158 | 140 |
| TJC | 212 | 188 |
| TJC | 240 | 104 |
| TJC | 310 | 140 |
| TJC | 374 | 330 |
| TJC | 488 | 432 |
| TJC | 636 | 562 |
| TJC | 790 | 440 |
| TJC | 1022 | 682 |
| TJC | 1430 | 1100 |
| *TJC | 2120 | 1120 |
| *TJC | 3040 | 3900 |
| *TJC | 3920 | 5030 |

| 4 SPRINGS | | |
|-----------|------------------|----------------------|
| TYPE | Max. LOAD (Lbs.) | Spring Rate (Lbs/in) |
| TJE | 84 | 72 |
| TJE | 220 | 196 |
| TJE | 316 | 280 |
| TJE | 424 | 376 |
| TJE | 480 | 208 |
| TJE | 620 | 282 |
| TJE | 748 | 662 |
| TJE | 976 | 864 |
| TJE | 1272 | 1124 |
| TJE | 1580 | 880 |
| TJE | 2044 | 1364 |
| TJE | 2860 | 2200 |
| *TJE | 4240 | 4240 |
| *TJE | 6080 | 7800 |
| *TJE | 7840 | 10060 |